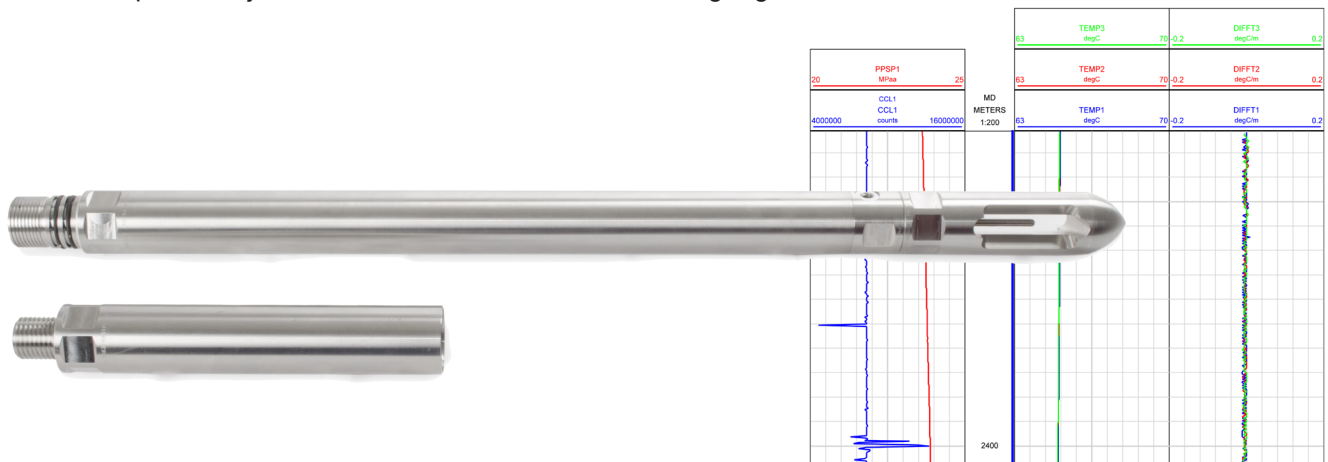


PPS63 RTD-CCL Memory Gauge

The **PPS63 RTD-CCL Memory Gauge** with its highly accurate RTD probe measures immediate temperature gradients while also measuring pressure and locating casing collars by CCL (casing collar locator). The gauge can be run in tandem with a depth measurement system, such as the PPS36 DepthWatcher which will enable the user to record line tension, speed and depth inconjunction with downhole data from the gauge.



Sensor Type

Pressure

Range—psi	Up to 15 kpsi
Accuracy—psi	± 0.03% FS
Resolution—psi	0.0003% FS
Drift—psi/year	< ± 3

Temperature

Rating—°C	150 (302 °F) 177 (350 °F)
Accuracy—°C	± 0.5
Resolution—°C	0.01

Characteristics

Service	Sour Services
Power Source	2.7 - 3.9 VDC, Lithium Battery Pack
Communication	USB / RS232
Data Set	Time / Pressure / Temperature / RTD / CCL
Max Outside Diameter—inches	1.5 (38 mm)
Overall Length—inches	33.5 (851 mm)
Housing Material	Inconel 718
Sampling Rate	0.1 second to 1.8 hours per sample
Memory Capacity	2,000,000 data sets standard

Peizo/RTD

Applications:

- Locate tubing damage such as corrosion holes or leaks
- Locate small casing leaks
- Monitor the efficiency of artificial lift valve systems
- Record accurate static and flowing temperature readings
- Determine crossflow over multiple comingled intervals

